

# ASSEMBLY

A9235 PRO SPEAK EVO  
FOR SOHO



1.



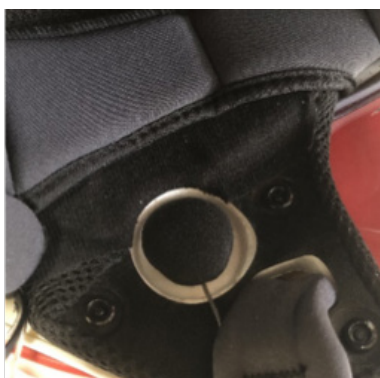
Remove the inner linings as indicated in the helmet user manual.

2.



Place the right speaker (R) in its seat on the velcro.

3.



Repeat the operations performed for the right (R) speaker for positioning the left (L).

4.



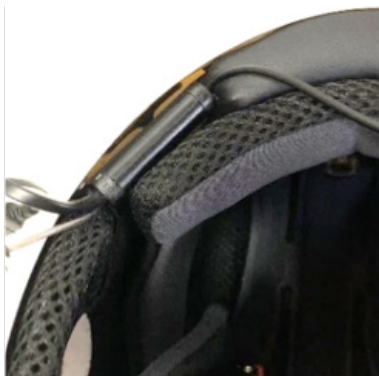
Place the microphone base under the chinstrap.

# ASSEMBLY

A9235 PRO SPEAK EVO  
FOR SOHO

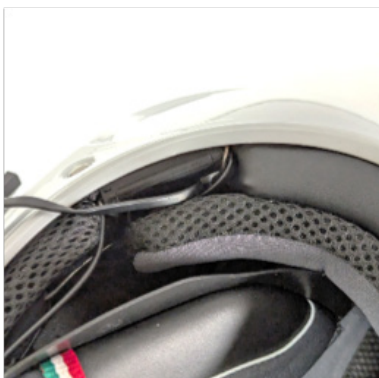


5.



House the speaker's cable (connecting the right speaker to the left) behind the rear cushion.

6.



Place the BT controller in the designated slot on the back of the inner shell.

7.



During the comfort cheekpads assembling, pass the flat cable of the remote control between the cheekpads's pp plate and the shell. The remote control must remain accessible outside the helmet.

8.



Fit the keypad on the left side (helmet on), approximately 10 mm from the lower edge of the shell using the provided adhesive. Make sure that there is full contact surface between the adhesive keypad and the outer shell.